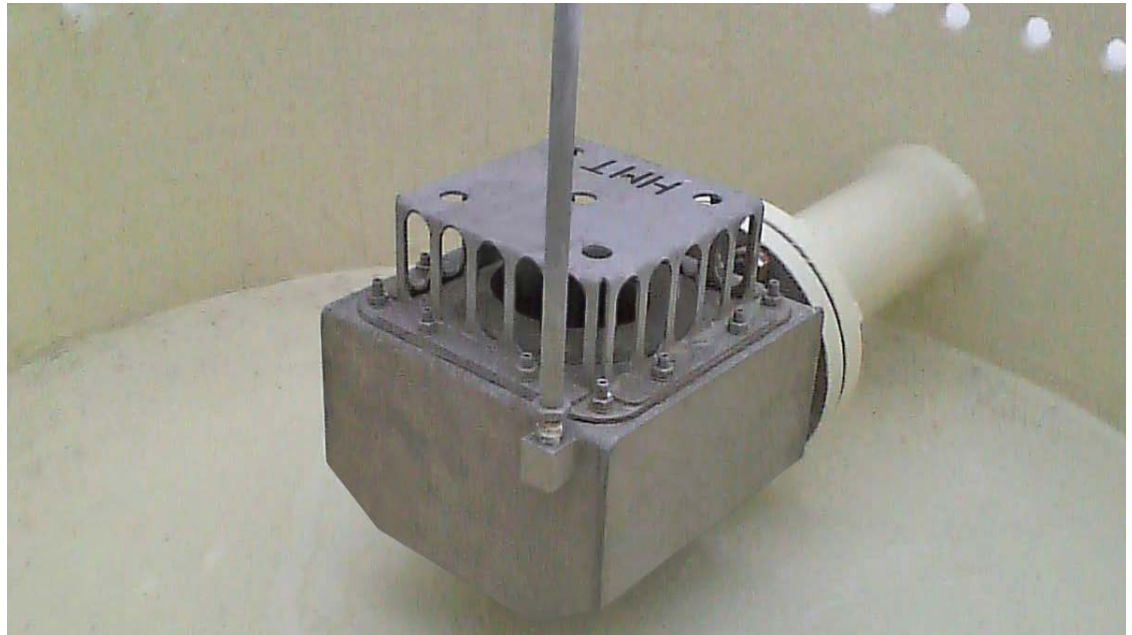




Protecting your world, one tank at a time®

SUMPMASTER® SUMP VALVES



The SumpMaster® is a sturdy sump valve designed to prevent product flow onto external floating roofs from drain system failures. The SumpMaster® addresses several problems with traditional check valves, including more effective sealing at the potentially lower pressures encountered during a drain system failure, and not restricting drain flow rates calculated during the design of the floating roof.

Key user benefits:

Backflow protection and peace of mind — the SumpMaster® keeps your roof protected from product backflow in the event of drain system failure

Maintenance-free — corrosion resistant, stainless steel construction

Superior sealing capability — in the event of product backflow, the SumpMaster® will seal more effectively than traditional systems. Over time, metallic-ball systems develop dents from normal movement, resulting in an uneven sealing surface. The non-metallic ball of the SumpMaster® will not wear or dent, maintaining excellent sealing capabilities for the life of the tank

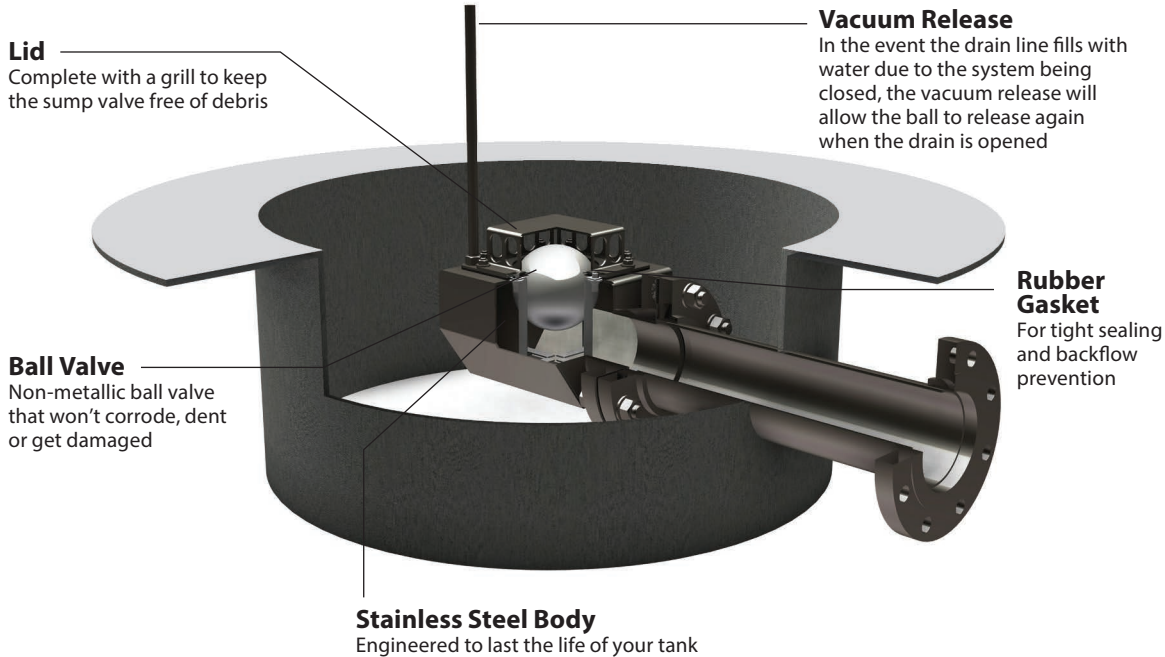
Fast and easy installation — easy bolt on / bolt off flanges

Custom designed — SumpMaster® can be fit with the customer's choice of flanges

Key design features:

- Designed to operate effectively at very low backflow pressures as opposed to the higher pressures required by traditional check valves
- Vacuum release allows the check ball to release in the event rainwater backs up inside the sump. When the drain line is opened from below, the ball is allowed to fall and the roof allowed to drain
- Non-metallic ball for superior wear and corrosion resistance
- Stainless steel body for superior wear and corrosion resistance
- A unique steel cage keeps the SumpMaster® free of debris
- Can be vertical or horizontal

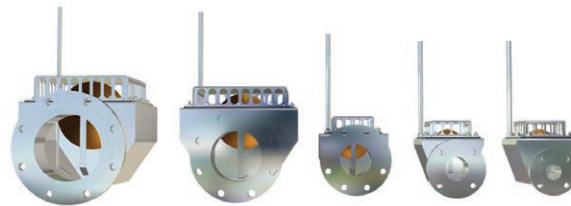
KEY DESIGN FEATURES



DESIGN TYPES

There are two types of SumpMaster® sump valves: vertical and horizontal. The sump valves are available in ANSI flanges and DIN flanges.

HORIZONTAL SIZES	MODEL
2"	250290
3"	290294
4"	250298
6"	250302
8"	250306



VERTICAL SIZES	MODEL
2"	250290
3"	290296
4"	250300
6"	250304
8"	25038



ABOUT HMT

HMT is the global leader in aboveground storage tank solutions. HMT provides advanced solutions to reduce emissions, optimize tank capacity, reduce stranded inventory and engineer a tank system that exceeds safety standards and extends maintenance intervals.

HMT's full suite of tank products includes: Internal/External Seal Systems - Internal/External Floating Roofs - Drain and Floating Suction Systems - Aluminum Domes - Emissions Reduction Devices.

HMT's quality services include: Tank Repair & Maintenance - Floating Roof & Seal Repair/Replacement - Installation Services - Fabrication Services - Project Management/Turnkey - Inspection, Calibration, Verticality & Roundness Studies - New Tank Construction - Painting, Coating & Lining - Engineering Services.

HMT LLC | 19241 David Memorial Dr., Suite 150, The Woodlands, Texas 77385

Ph: +1.281.681.7000 | Fax: +1.281.419.7689 | Locations worldwide

www.hmttank.com

SUMPMASTM is a trademark of HMT LLC.

©2017 HMT. Confidential material. All rights reserved.



Rev4_11-2018