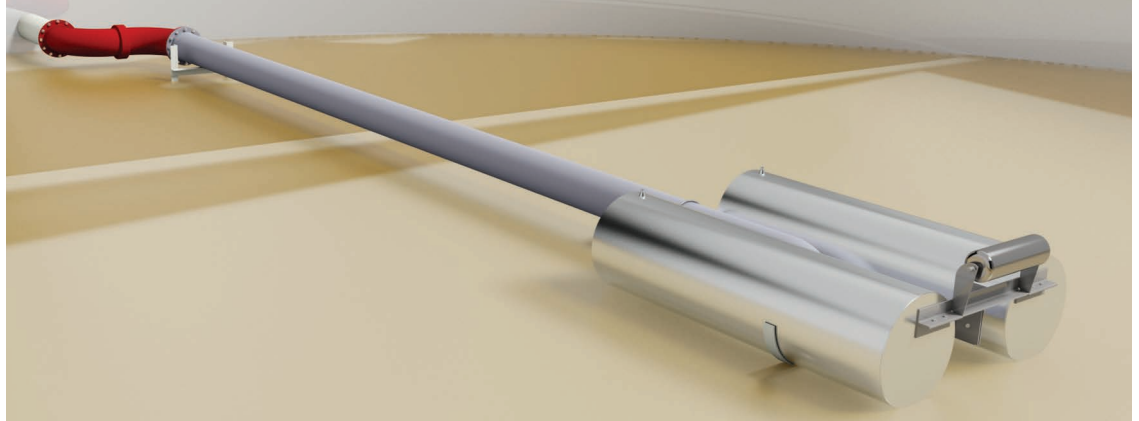




Protecting your world, one tank at a time®

LARGE DIAMETER FLOATING SUCTION SYSTEMS



HMT offers large diameter Floating Suction systems to meet customer needs world-wide; enabling the removal of stored product near the product surface, contaminate-free.

The Floating Suction systems utilize design technology and materials of construction consistent with all other HMT products that deliver dependable service for the life of your tank. The HMT Floating Suction systems are designed to meet all requirements of the storage tank size and submerged environment.

Key benefits:

The HMT large diameter Floating Suction systems offer a quality, flexible solution to drawing product from the tank. Here's why:

Product compatibility options — swivel joints and pontoons available in carbon steel or stainless steel; special alloys available for chemical or other demanding applications

Consistent removal of desired product — provides a consistent quality of product drawn from the tank

Custom engineered to tank specifications — designed to meet requirements of each specific tank

Easy, fast installation — all components can be assembled on site

Durable, long life — quality components designed for submerged use and long-lasting, consistent performance

Key design features:

- Floats and swivel joints available in carbon steel or stainless steel; special alloys available upon request
- Sizes range from 10" to 36" (DN50-DN900) with 10" - 24" (DN50-DN600) available in stock; larger sizes available as special requests
- Can be installed with all types of floating roofs or without a floating roof
- Designed according to tank characteristics
- Utilizes high quality swivel joints with two ball track rotational elements, which enable the transport of liquid between two relatively moving points
- Constructed with rigid pipe to avoid sediment trap areas
- Optional sampling system in conjunction with the Floating Suction; allows for samples to be taken at different levels within the stored product
- Sample pipe rack can be welded or bolted to the floating suction unit

THE HMT LARGE DIAMETER FLOATING SUCTION SYSTEM DESIGN

HMT's large diameter Floating Suction are a customizable, durable option. Here's why:

1. Designed according to tank characteristics

HMT Floating Suction systems are engineered to operate in conjunction with all types of floating roofs or without a floating roof.

The swivel joints and floats used to construct the Floating Suction systems are available in carbon steel or stainless steel; with special alloys available to meet your storage application needs.

2. Constructed with high-quality swivel joints

The HMT Floating Suction systems utilize high quality swivel joints with two ball track rotational elements, and an axial seal constructed of PTFE. The swivel joints are approved up to a maximum pressure of 6091 psi (420 bar) and operating temperatures up to 356° F (180° C).

3. Easy, fast installation

The HMT pre-fabricated Floating Suction Systems can be shipped on the site for final assembly and installation by an HMT service crew or installed by others.



ABOUT HMT

HMT is the global leader in aboveground storage tank solutions. HMT's global team of engineers, project managers and field personnel can assist with common challenges including ways to reduce emissions, optimize tank capacity, reduce stranded inventory and engineer a tank system that exceeds safety standards and extends maintenance intervals.

HMT's full suite of tank products includes: External & Internal Seal Systems - Floating Roof Drain, Floating Suction & Skimmer Systems - Geodesic Domes - Skin & Pontoon IFRs - Full Contact IFRs - Emissions Reduction Devices

HMT LLC | 24 Waterway Avenue, Suite 400, The Woodlands, Texas 77380
Ph: +1.281.681.7000 | Fax: +1.281.419.7689 | Locations worldwide
www.hmttank.com

