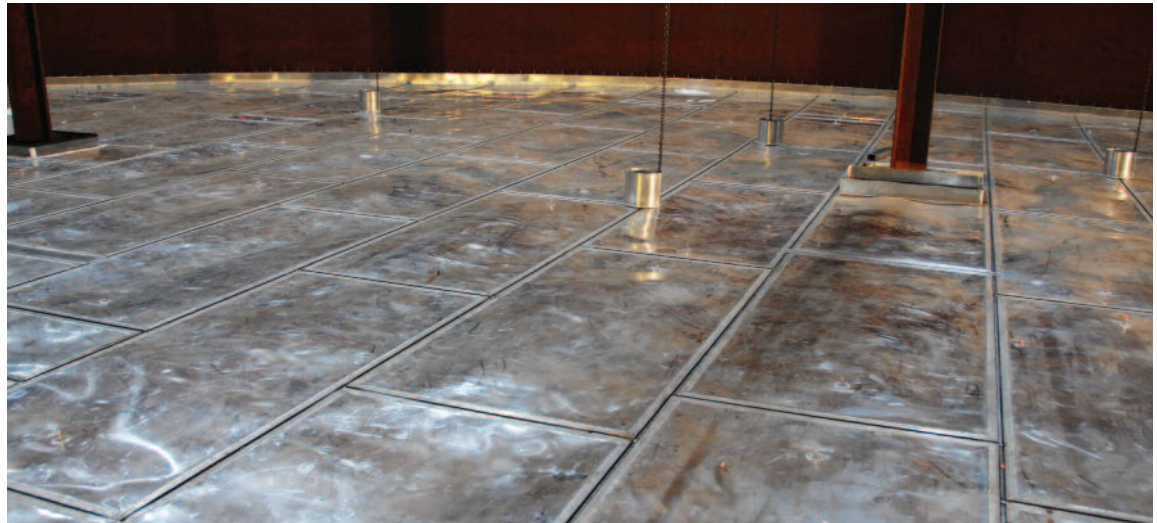




ALUMINATOR™ FC

Full Contact Floating Roof



The ALUMINATOR FC Full Contact Floating Roof is a new approach to solving emission problems from aboveground storage tanks. The ALUMINATOR FC roof is completely vapor tight per API 19.2.

The roof is composed of lightweight individual panel modules assembled to form a completely sealed full contact floating roof. Each individual panel is a self contained flotation compartment. The complete assembled structure is extremely strong, stable, and safe for personnel access and complies entirely with the design requirements of API 650, Appendix H.

Structural strength of the roof is provided through mechanical fastening of the underside of the panels, not through welding. Complete sealing in accordance with API 19.2 is provided through welding of the top seams. Each factory assembled panel module is tested in the shop to insure vapor tightness. The main panels are sized for easy handling in the field, with special panels made around the perimeter so that the completed structure fits any tank diameter.

The bottom side of the roof is in complete contact with the product and the top side is a deck for foot and operator traffic. Panels are specially designed for easy assembly and welding in the field. Proprietary welding techniques are used to seal weld the seams between the assembled panels. Upon completion of the welding, the seal welds are vacuum box tested to insure vapor tightness.

HMT provides fully factory trained welding personnel equipped to perform the field welding for each installation.

Full contact roofs prevent vapor buildup under the roof, greatly reducing emissions. As the ALUMINATOR FC is totally seam welded, no vapors, even in small amounts, can escape through the seams.

Contact your local HMT representative to discuss the full suite of products and services that will satisfy all your AST needs.

The ALUMINATOR™ FC's Unique Design Features Include the Following:

- Fully welded construction with no field bolted seams. Qualifies as a welded roof under API 19.2 definitions.
- The assembled structure meets or exceeds the design requirements of API 650 Appendix H.
- 100% aluminum construction. Materials in compliance with API 650 Appendix H.
- Materials are compatible with a wide range of stored products.
- Employs a unique panel design. Each panel module is fully factory tested for vapor tightness and can be individually field inspected for vapors.
- No messy or dangerous filler material.
- No deck support penetrations whether installed as a cable or leg supported roof. This reduces the deck fitting losses to lower levels than welded steel roofs.
- Strong enough to support all seal systems, including metallic shoe primary seals and secondary seals.
- Light weight structure with exceptional strength through proprietary construction techniques.
- Full contact design increases safety against vapor ignition by external sources.
- Fully factory trained welding personnel and specialized equipment are provided to perform the field welding for each installation.
- Utilized with an HMT Geodesic Dome Roof, the ALUMINATOR FC provides maximum vapor loss control coupled with added storage capacity.



HMT Inc.
24 Waterway Avenue, Suite 400
The Woodlands, Texas 77380
Ph: +1.281.681.7000
Fax: +1.281.419.7689

Locations worldwide to service
all your AST needs.

Visit us at www.hmttank.com