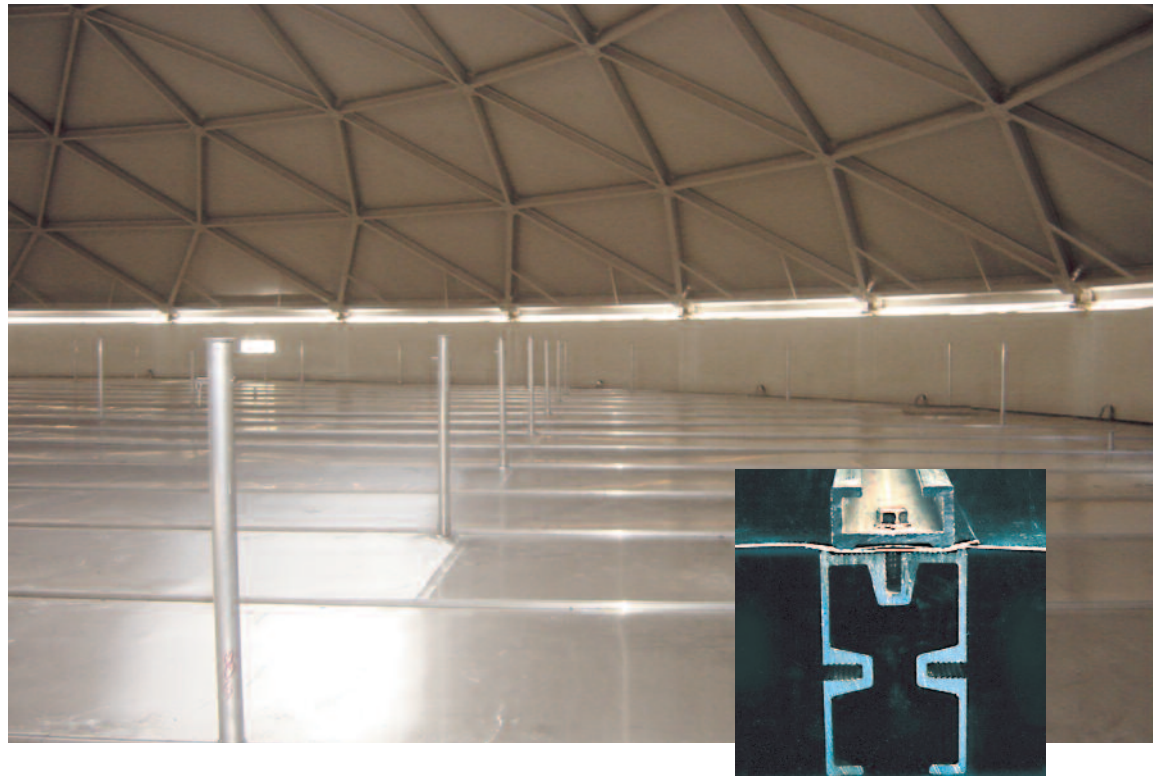




ALUMINATOR™ 1000

Internal Floating Roof



HMT's ALUMINATOR™ family of internal floating roofs were developed in response to the market demand for a high quality, high strength aluminum pontoon roof that can readily accommodate a mechanical shoe seal and not be subject to the failure modes that plague conventional lightweight designs. All ALUMINATOR roofs meet or exceed the requirements of AP1650 Appendix H.

HMT's ALUMINATOR 1000 Internal Floating Roof eliminates the typically weak and failure prone problems found in standard aluminum roofs. Broken leg gussets, legs ripped through deck sheeting, cracks in the weld of pontoon end caps, hydrocarbon vapor leakage through deck bolting, along with the many other common AIFR problems are a thing of the past.

The ALUMINATOR 1000's unique structural arrangement is based on the HMT SIGMA STRUT deck support system. The SIGMA STRUT's high section modules allow for a complete support of the roof, independent of the pontoons.

The unique rim channel design, incorporating the same superior strength given to the deck structure, allows for the mounting of primary shoe seals and secondary seals without any modifications to the standard roof.

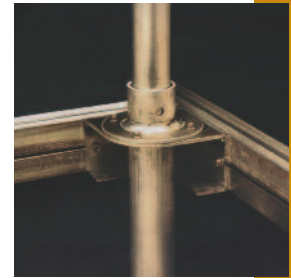
Let HMT put our three decades of experience in the design, manufacture, supply and installation of aluminum structures to work for you today.

Contact your local HMT representative to discuss the full suite of products and services that will satisfy all your AST needs.

The ALUMINATOR™ 1000's Unique Design Features Include the Following:

- SIGMA STRUT girders are specifically designed for a 1,000 pound load limit prior to considering the additional strength provided by the completed structure.
- SIGMA STRUT girders are designed with extruded continuous threaded bolting slots. These bolting slots prevent vapors from escaping through the bolt holes and allow easier attachment of leg assemblies, pontoon saddles, cross girders, etc. They also provide more thread engagement area than in conventional designs.
- The ALUMINATOR 1000 rim channel provides additional structural support to the roof and is designed with the strength to support both a primary mechanical shoe seal and a secondary seal without additional modifications
- The leg supports connect to the girder structure instead of between the pontoons allowing for repeated flexing without pontoon end cap failure. Girder spacing does not exceed 57 inches.
- Standard 10 inch pontoons are attached to the roof using extruded pontoon saddles and straps. pontoons are not structural components, they do not contain gussets and are not interconnected. The maximum spacing between pontoon rows is 10 feet.

- Standard deck sheeting is 0.025" nominal thickness which is 25% heavier than the minimum allowed by standards.
- The ALUMINATOR 1000 can be cable suspended from either cone roof tanks or geodesic dome roofs. The option allows roof height adjustments to be completed from the outside of the tank. With no leg structure under the roof, cleaning inspection and repairs to the tank bottom are simplified.
- The ALUMINATOR 1000 can be altered to a hybrid stainless steel/aluminum design when the stored product is not completely compatible to the aluminum alloy.
- The ALUMINATOR 1000 is easily fitted with a mechanical shoe seal utilizing a laminated Teflon® vapor barrier fabric. This provides a compatible seal system to the many products and additives stored in floating roof tanks.
- The ALUMINATOR 1000 is completely constructed without welding and can fit through a 24 inch manway, allowing for much faster installation and quicker tank turnaround.



HMT Inc.
24 Waterway Avenue, Suite 400
The Woodlands, Texas 77380
Ph: +1.281.681.7000
Fax: +1.281.351.8589

Locations worldwide to service
all your AST needs.

Visit us at www.hmttank.com

ALUMINATOR™ and SIGMA STRUT™
are trademarks of HMT Inc.
Teflon® is a registered trademark
of DuPont or its affiliates.